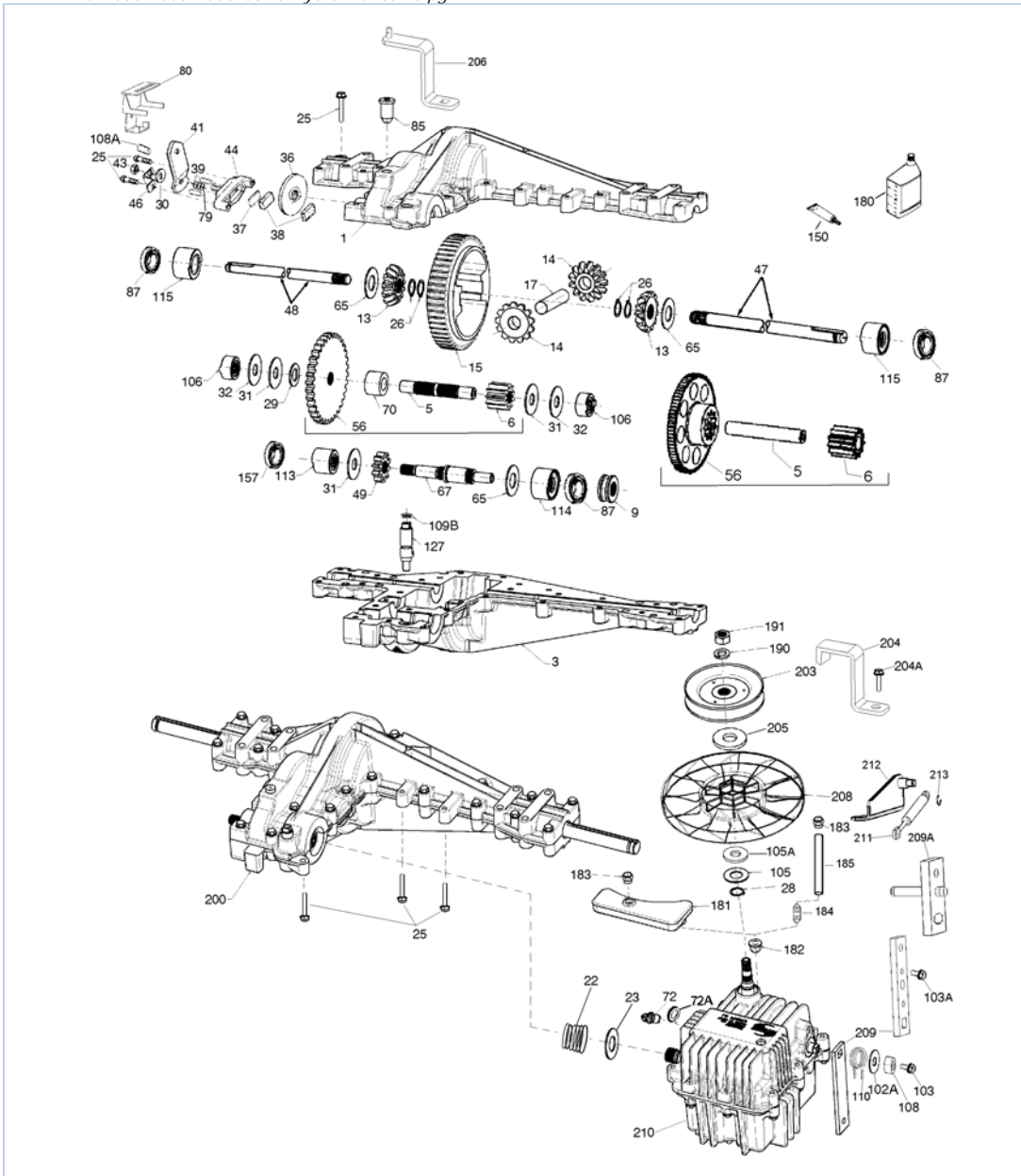


lth2000 2000-2000-032 / Hydro Transaxle pg 1

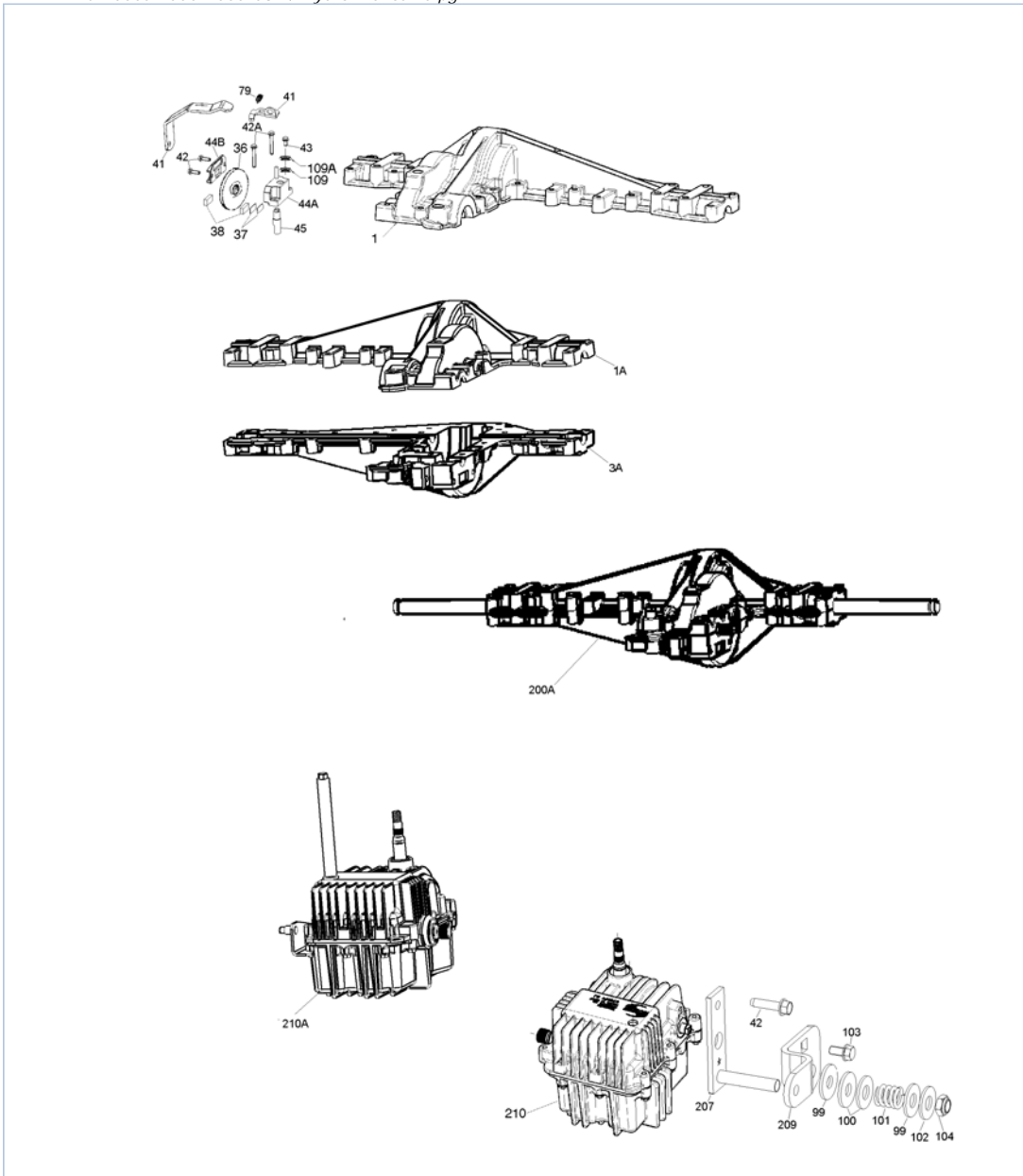


Part List

lth2000 2000-2000-032 / Hydro Transaxle pg 1

REF #	ITEM #	DESCRIPTION	QTY	REMARK
5	776441	Counter Shaft	1	
6	778263	Spur Gear 11T	1	
9	786197	Neutral Sleeve .572L	1	
13	778368	Bevel Gear 13T (Incl. 14)	2	
14	778368	Bevel Gear 13T (Incl. 13)	2	
15	778373	Ring Gear 54T	1	
17	786139	Drive Pin	1	
22	792194	Spring	1	
23	792195	Washer .750ID .032T	1	
25	792073A	Screw 1/4-20 x 1.25	27	
26	792125	Retaining Ring	4	
28	792035	Retaining Ring	1	
29	780065	Washer .627ID .091W	1	
31	780189	Washer .563ID .062W	3	
47	775120	Axle 17.219"	1	
48	775121	Axle 12.062"	1	
49	778311	Spur Gear 10T (steel)	1	
56	778310	Spur Gear 34T (steel)	1	
65	780001	Washer .750ID .56W	3	
67	776440	Brake Shaft	1	
70	786196	Spacer .625	1	
85	792154	Oil Fill Plug	1	
87	788088A	Oil Seal .750	3	
103	792193	Screw 1/4-28 x .490	3	
103A	792205	Screw 1/4-28 x .406	2	
105	780096	Washer .625ID .057W	1	
106	786162	Sleeve & Bearing Assy	2	
108	786202	Spacer .510 ID	1	
109B	788104	O-Ring .364ID	1	
110	798052	Neutral Return Spring	1	
113	786199	Sleeve Assembly (Incl. 157)	1	
114	786200	Sleeve Assembly (Incl. 87)	1	
115	786198	Sleeve Assembly (Incl. 87)	2	
127	784385	Shift Lever Assembly (Incl. 109B)	1	
150	788093A	Liquid Gasket RTV Silicon	1	
157	788102	Oil Seal .5625ID	1	
180	730229B	Gear Oil 80W90	1	
181	798064	Overflow Bottle	1	
182	788103	Grommet	1	
190	792150	Washer .443ID .109W	1	
191	792151	Nut 7/16-20	1	
203	798062	Pulley & Hub Assembly	1	
206	798055	Disconnect Lever	1	
208	798040	Fan	1	
209	798070	Control Lever	1	
209A	798051	Neutral Lever	1	

lth2000a 2000-2000-032 / Hydro Transaxle pg 2



Part List

lth2000a 2000-2000-032 / Hydro Transaxle pg 2

REF #	ITEM #	DESCRIPTION	QTY	REMARK
1A	772152A	Cover RH (Mach)	1	
3A	770136	Case RH (Cast)	1	
99	792141	Washer .3771D .058W	1	
103	792193	Screw 1/4-28 x .490	3	
200A	794833	Differential (Gear Reduction Drive)	1	
209	798070	Control Lever	1	
210A	794834	Hydro Module RH (Foot Control)	1	